

Hytera Hytalk Sight Mobile Video Surveillance Platform

- Multi-Path Access
- Protocol Compatibility
- Third-Party Applications
- Smart Analysis
- Diverse Features
- Lightweight Deployment





Hytera Hytalk Sight Mobile Video Surveillance Platform

Hytera Hytalk Sight Mobile Video Surveillance Platform is a comprehensive body worn cameras (BWCs) management solution. It integrates the video surveillance, visualized dispatch, and push-to-talk communications into a collaborative solution with enhanced user experience. This effectively removes barriers to information access and sharing for both officers in the field and commanders in the control center.

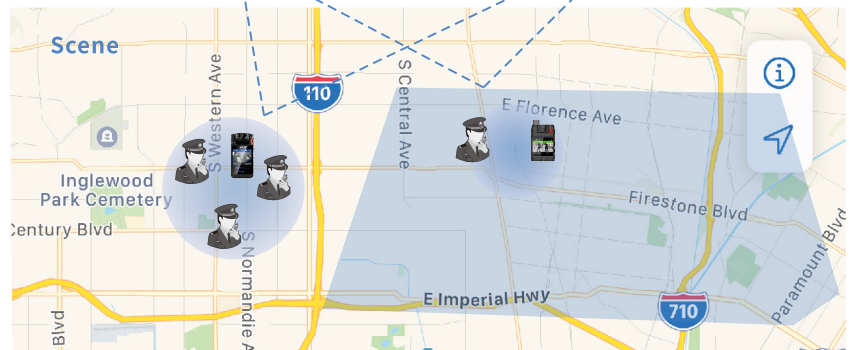
The user-friendly interface makes you easily and quickly access the live video, photos, and audio captured by the BWC. At a click of the mouse, you can talk with your people in the field. All of these presents clear and easily understood information for better situational awareness to ensure resource synchronization and officer safety.



Command center



Field dispatch center



Highlights



Multi-Path Access

- Supports up to 50-path video pulling
- Supports 1,000 devices and 1,000 Clients on a single server
- Expands system capacity to incorporate 100,000 devices by cascading servers



Lightweight Deployment

- Realizes high-capacity storage and data backup to provide stable flow media services through a static IP
- Can be deployed in public, private, or local area network



Diverse Features

- Visual dispatch: Video pulling, video query, historical track playback, PTT call, remote device management, hierarchical user management, and log query
- Alarm notification: Emergency alarm, camera block alarm, and man down



Smart Analysis

- Recognizes human faces and license plate number
- Detects fire disasters



Protocol Compatibility

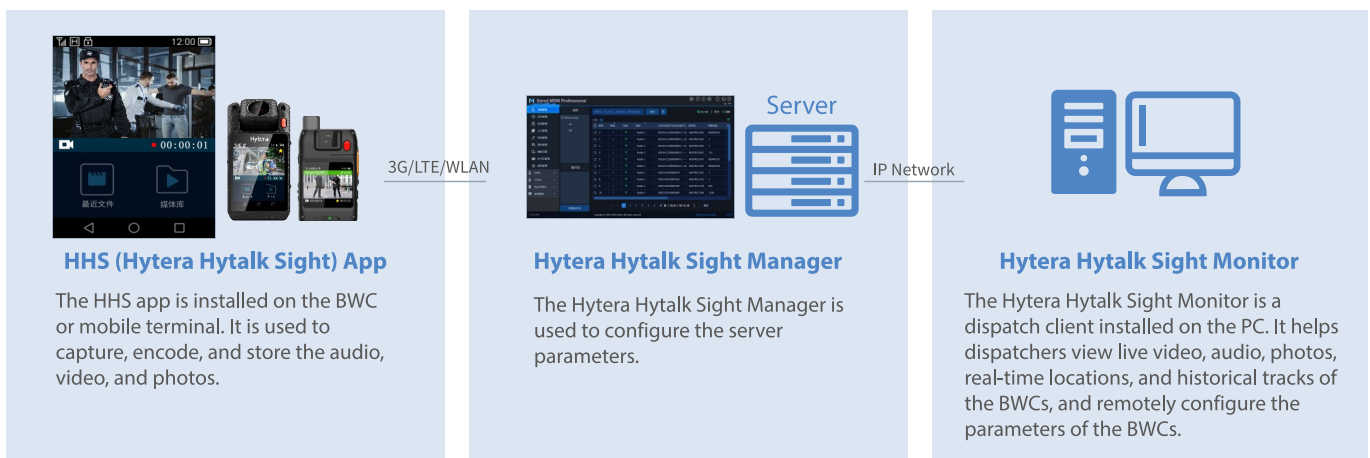
- Supports standards protocols including ONVIF and RTSP
- Can be accessed through the 3G, LTE, or WLAN network



Third-Party Applications

- Supports third-party applications such as face recognition, digital evidence management, and closed-circuit television (CCTV)

System Components



HHS (Hytera Hytalk Sight) App

The HHS app is installed on the BWC or mobile terminal. It is used to capture, encode, and store the audio, video, and photos.

3G/LTE/WLAN



Server

Hytera Hytalk Sight Manager

The Hytera Hytalk Sight Manager is used to configure the server parameters.

IP Network



Hytera Hytalk Sight Monitor

The Hytera Hytalk Sight Monitor is a dispatch client installed on the PC. It helps dispatchers view live video, audio, photos, real-time locations, and historical tracks of the BWCs, and remotely configure the parameters of the BWCs.

Server Performance

Item	Specification
System capability (distributed deployment)	
Maximum number of connected devices	100,000
Maximum number of clients	100,000
Maximum number of concurrent videos	3,000
System capability (standalone deployment)	
Maximum number of connected devices	1,000
Maximum number of clients	1,000
Maximum number of concurrent videos	200

Key Features



Real-time Dispatch

- Video and voice pull
- Remote snapshot
- Remote voice recording
- Remote video recording
- Remote playback
- Audio and video file query



Trunking Communications

- PTT call
- Instant messaging



Positioning Management

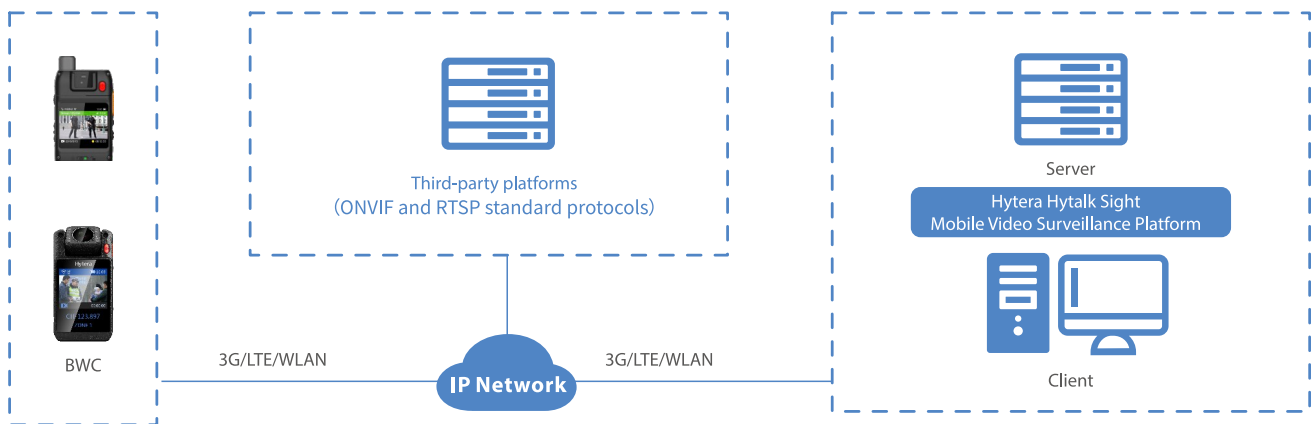
- Real-time positioning
- Historical track
- Route planning
- Electronic fence



Device Management

- Basic information
- Parameter modification
- Acquisition settings
- Watermark
- Online/offline presence
- Time synchronization
- Alarm management
- Remote check of device status information

System Architecture



Hytera Hytalk Sight Mobile Video Surveillance Platform adopts the client/server (C/S) architecture and can be deployed in public, private, or local area network.

The Hytera Hytalk Sight Server is deployed in the command center to store and transfer all the data. The Hytera Hytalk Sight Monitor enables the officer to perform visualized dispatch in either the command center or mobile command vehicle.

Hytera
Respond & Achieve

Hytera Communications Corporation Limited
Stock Code: 002583.SZ
Address: Hytera Tower, Hi-Tech Industrial Park North, 9108# Beihuan Road, Nanshan District, Shenzhen, P.R.C
Tel: +86-755-2697 2999 Fax: +86-755-8613 7139 Post: 518057
Https://www.hytera.com marketing@hytera.com



Hytera retains right to change the product design and specification. Should any printing mistake occur, Hytera doesn't bear relevant responsibility. Little difference between real product and product indicated by printing materials will occur by printing reason.

HYT, Hytera are registered trademarks of Hytera Communications Corp., Ltd.
© 2022 Hytera Communications Corp., Ltd. All Rights Reserved.